

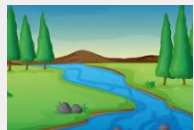
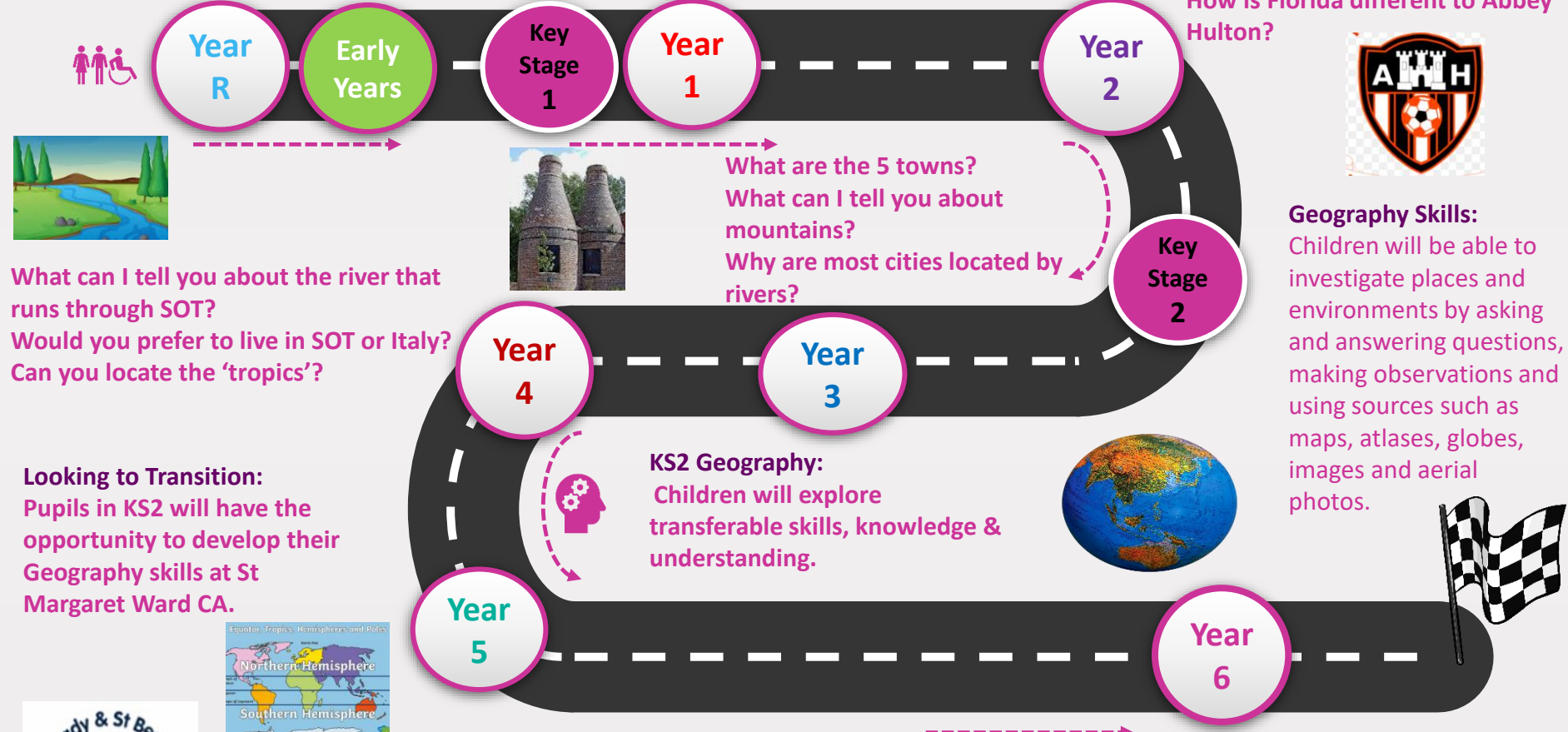
My Geography Learning Journey

Early years:
Children know about similarities and differences in relation to places and environments.

Map Globe and atlas skills:
Can I navigate my way around school and its grounds?
How is Abbey Hulton different to London?
What do I know about the North and South Poles?



Map, globe and atlas skills:
What can I tell you about Abbey Hulton?
Is Australia very different to Abbey Hulton?
How is Florida different to Abbey Hulton?



What can I tell you about the river that runs through SOT?
Would you prefer to live in SOT or Italy?
Can you locate the 'tropics'?



What are the 5 towns?
What can I tell you about mountains?
Why are most cities located by rivers?

Looking to Transition:
Pupils in KS2 will have the opportunity to develop their Geography skills at St Margaret Ward CA.

KS2 Geography:
Children will explore transferable skills, knowledge & understanding.



Geography Skills:
Children will be able to investigate places and environments by asking and answering questions, making observations and using sources such as maps, atlases, globes, images and aerial photos.



Can I identify similarities and differences between SOT and a contrasting local area?
What is life in North America like compared to life in the UK?
What is a desert biome?

What are the main physical and human features that make the Peak District unique?
Is it safe to live in an earthquake zone?
Are all goods traded fairly?

